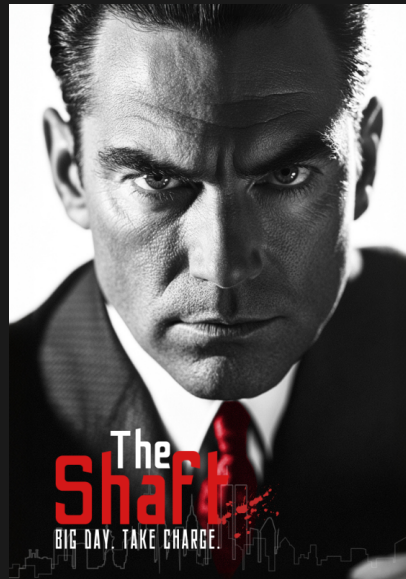


THE SHAFT

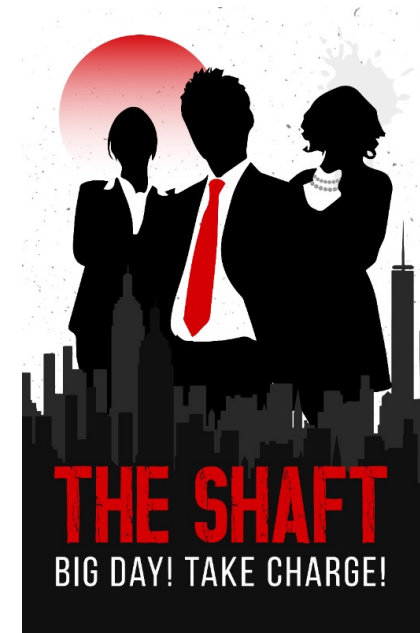
A psychological noir thriller by DJ Manning

Tone. Tension. Power. Secrets.



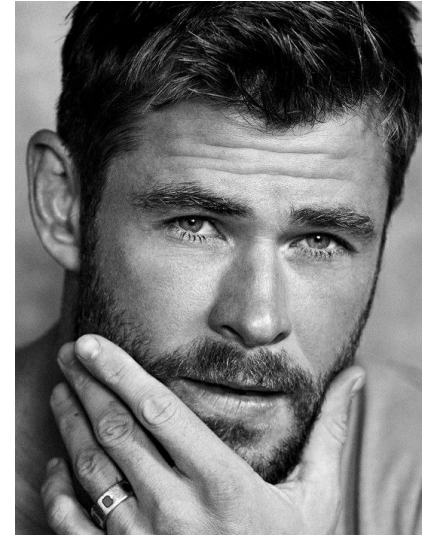
Visual Tone & World

- New York City, 2025 — but seen through a mid-century lens.
- Clean lines, shadows, and selective color — noir meets brutalist modern.
- A world of glass, chrome, blood, and silence.
- Masculinity under pressure. Sexuality coiled like a spring.
- Think: 'Zodiac', 'Carol', 'Eyes Wide Shut', 'Nightcrawler'.



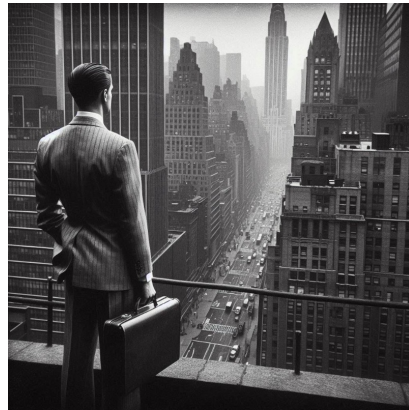
Bob Chamberland — Our Center

- Jake Gyllenhaal type: smart, tightly wound, beautiful and dangerous.
- A man haunted by who he is... and who he refuses to be.
- Power is survival. But control is the addiction.
- He's being hunted — by the past, by his lovers, by his own truth.



Director Tone Compatibility

- Dan Gilroy — 'Nightcrawler': Urban dread, obsessive leads, psychological power.
- Todd Haynes — 'Carol': Elegant repression, queer subtext, visual mastery.
- Emerald Fennell — 'Saltburn': Stylized menace, gorgeous brutality.
- Antonio Campos — 'Christine': Cold realism, damaged masculinity.
- Karyn Kusama — 'Destroyer': Raw descent, power dynamics under pressure.



THE SHAFT

Packaging Ready • Cast-Driven • Stylistically Singular



Written by DJ Manning | www.danforthmusic.org